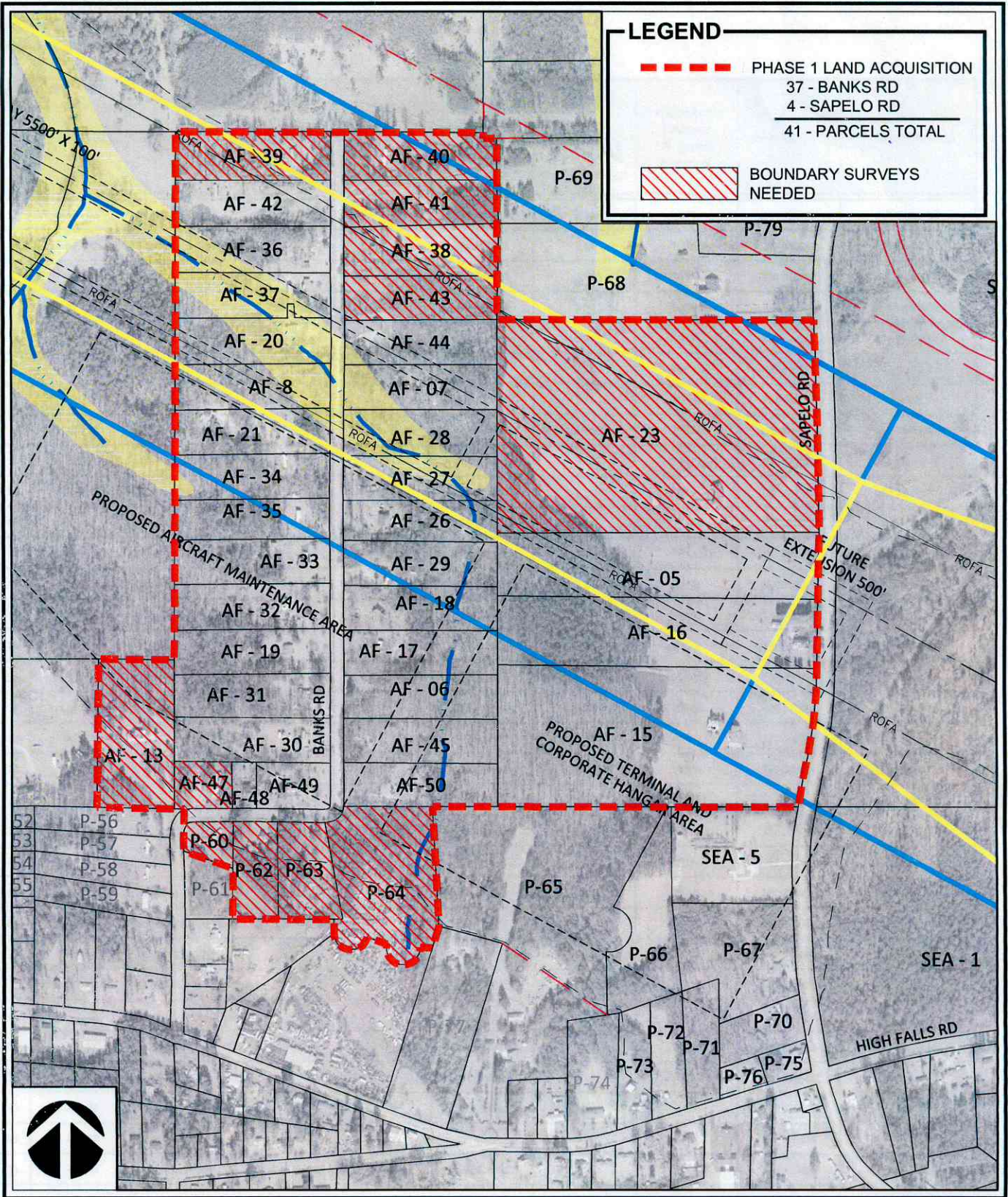


Y:\Airports\Griffin\124311 - Land Acq-Ph 1\Design\dwg\01-LandAcquisition-EXHIBIT PH1-2015-09-30.dwg Plotted on: Sep 30, 2015 - 11:21am by ecclies



LEGEND

- PHASE 1 LAND ACQUISITION
- 37 - BANKS RD
- 4 - SAPELO RD
- 41 - PARCELS TOTAL

- BOUNDARY SURVEYS NEEDED



**NEW GRIFFIN-SPALDING COUNTY AIRPORT
GRIFFIN, GEORGIA**

**Michael Baker
INTERNATIONAL**

**LAND ACQUISITION PROGRAM
PHASE 1**

EXHIBIT 1