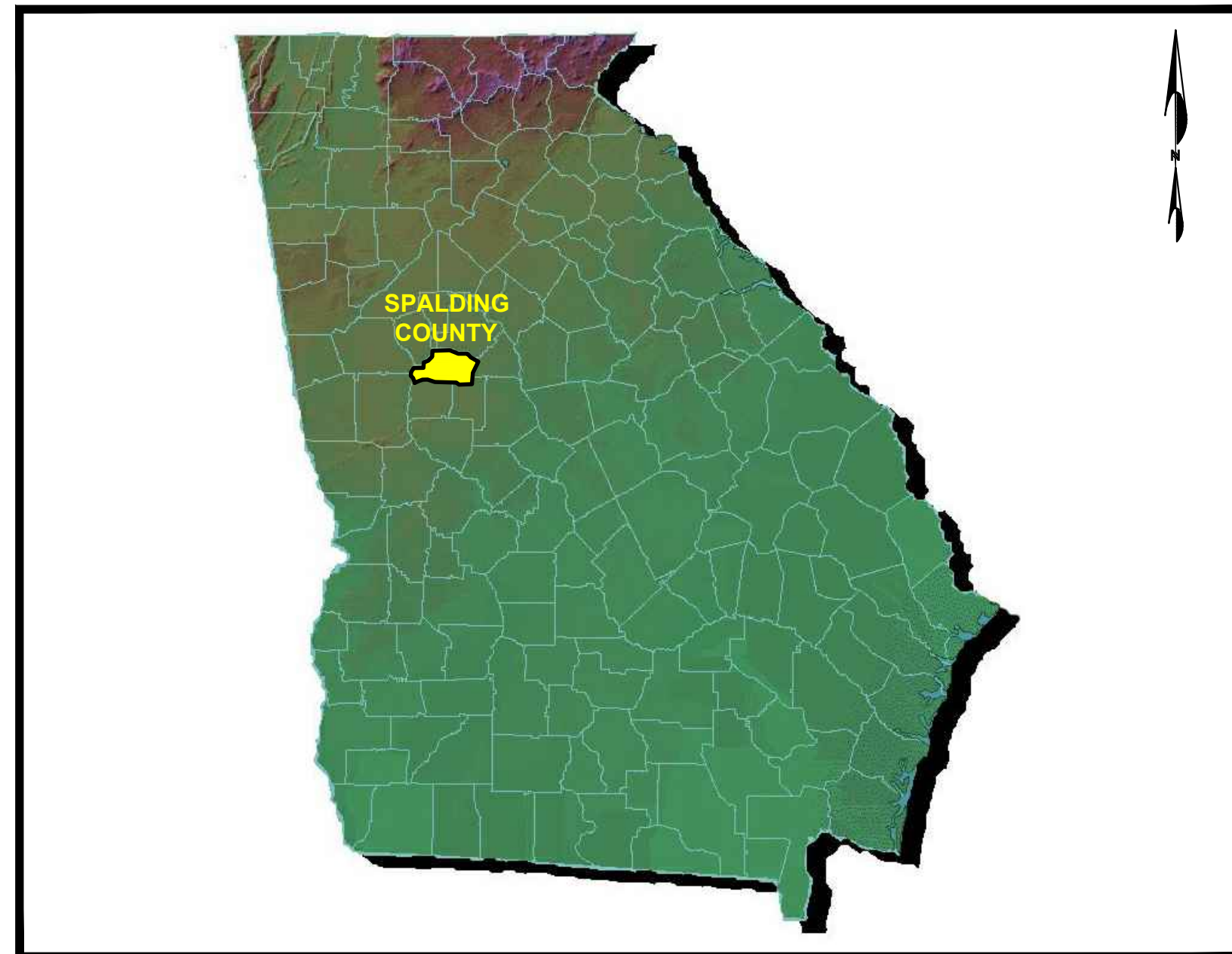


AIRPORT LAYOUT PLAN SET

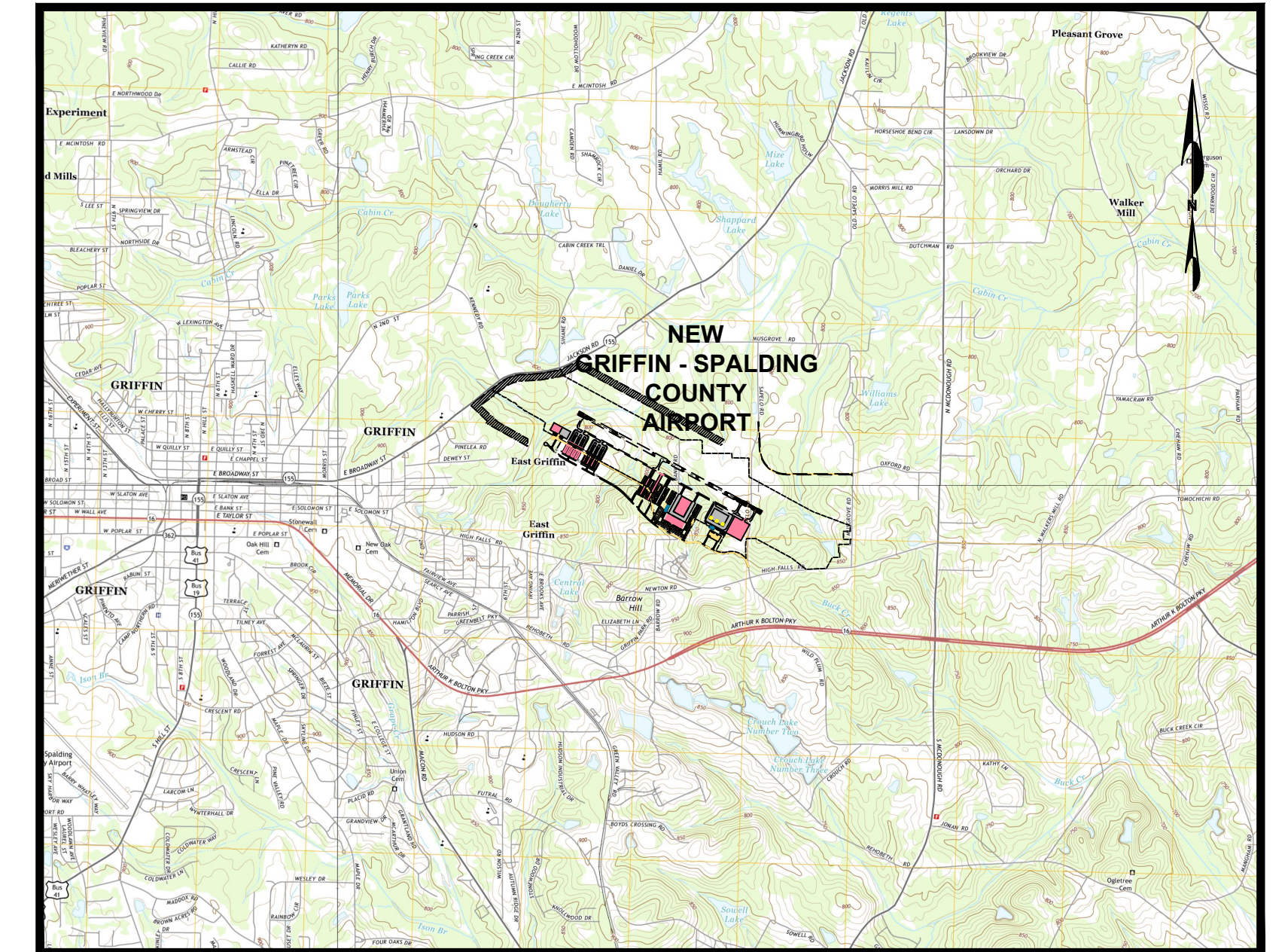
NEW GRIFFIN - SPALDING COUNTY AIRPORT

GRIFFIN, GEORGIA



LOCATION MAP

INDEX OF DRAWINGS		
DRAWING NO.	DESCRIPTION	REVISION DATE
1	TITLE SHEET	8/7/17
2	AIRPORT LAYOUT DRAWING	8/7/17
3	AIRPORT DATA SHEET	7/31/17
4	EAST TERMINAL AREA PLAN	7/31/17
5	WEST TERMINAL AREA PLAN	8/7/17
6	AIRPORT AIRSPACE DRAWING (1 OF 3)	7/31/17
7	AIRPORT AIRSPACE DRAWING (2 OF 3)	7/31/17
8	AIRPORT AIRSPACE DRAWING (3 OF 3)	7/31/17
9	INNER PORTION OF THE APPROACH SURFACE DRAWING – RUNWAY 12	8/7/17
10	INNER PORTION OF THE APPROACH SURFACE DRAWING – INITIAL RUNWAY 30	7/31/17
11	INNER PORTION OF THE APPROACH SURFACE DRAWING – ULTIMATE RUNWAY 30	7/31/17
12	DEPARTURE SURFACE DRAWING	8/7/17
13	OBSTRUCTION DATA SHEET – RUNWAY 12 INNER PORTION	7/31/17
14	OBSTRUCTION DATA SHEET – RUNWAY 12 DEPARTURE SURFACE	7/31/17
15	OBSTRUCTION DATA SHEET – RUNWAY 30 INNER PORTION	7/31/17
16	OBSTRUCTION DATA SHEET – RUNWAY 30 DEPARTURE SURFACE	7/31/17
17	LAND USE DRAWING	8/7/17
18	EXHIBIT "A" AIRPORT PROPERTY INVENTORY MAP	8/7/17



VICINITY MAP

AUGUST 2017

PREPARED FOR:

**City of Griffin and Spalding County,
Georgia**



Michael Baker
INTERNATIONAL

AIRPORT SPONSOR APPROVAL

THIS AIRPORT DRAWING IS APPROVED BY:

(SIGNATURE) _____ DATE: _____

NAME: _____

TITLE: _____

THE PREPARATION OF THIS DOCUMENT WAS FINANCED IN PART THROUGH A PLANNING GRANT FROM THE FEDERAL AVIATION ADMINISTRATION AS PROVIDED UNDER SECTION 505 OF THE AIRPORT AND AIRWAY IMPROVEMENT ACT OF 1982. THE CONTENTS DO NOT NECESSARILY REFLECT THE OFFICIAL VIEWS OR POLICY OF THE FAA. ACCEPTANCE OF THIS REPORT BY THE FAA DOES NOT IN ANY WAY CONSTITUTE A COMMITMENT ON THE PART OF THE UNITED STATES TO PARTICIPATE IN ANY DEVELOPMENT DEPICTED THEREIN NOR DOES IT INDICATE THAT THE PROPOSED DEVELOPMENT IS ENVIRONMENTALLY ACCEPTABLE IN ACCORDANCE WITH APPROPRIATE PUBLIC LAWS.