



**Griffin-SPALDING
COUNTY AIRPORT**
GRIFFIN, GEORGIA

**Michael Baker
INTERNATIONAL**

Designer:

JCD, TGM

Technician:

TGM

Checked by:

JCD

Project Number:

143849

NOTES

1. ALL ELEVATIONS SHOWN ARE IN NAVD88 AND ARE ABOVE MEAN SEA LEVEL (AMSL).
2. TOWER OBSTRUCTION DATA OBTAINED FROM THE FAA'S DIGITAL OBSTACLE FILE (DOF) EFFECTIVE DATE MAY 24, 2015 AND OE/AAA DATABASE, RETRIEVED DEC. 9, 2015.
3. BASE MAP TAKEN FROM THE U.S.G.S. 7.5 MINUTE SERIES QUADS: GRIFFIN NORTH, GA; GRIFFIN SOUTH, GA; HIGH FALLS, GA; INDIAN SPRINGS, GA; JOHNSTONVILLE, GA; LOCUST GROVE, GA; LUELLEA, GA; ORCHARD HILL, GA.
4. SEE INNER PORTION OF THE APPROACH SURFACE DRAWINGS FOR CLOSE-IN OBSTRUCTIONS.
5. FAA CLEARANCE REQUIREMENTS NOTE: SECTION 77.23 OF FEDERAL AVIATION REGULATIONS (FAR) PART 77 SPECIFIES CLEARANCE REQUIREMENTS FOR ROADS, RAILROADS, AND WATERWAYS AS FOLLOWS:
 - A. SEVENTEEN FEET FOR AN INTERSTATE HIGHWAY THAT IS PART OF THE NATIONAL SYSTEM OF MILITARY AND INTERSTATE HIGHWAYS WHERE OVERCROSSINGS ARE DESIGNED FOR A MINIMUM OF 17 FEET VERTICAL DISTANCE.
 - B. FIFTEEN FEET FOR ANY OTHER PUBLIC ROADWAY.
 - C. TEN FEET OR THE HEIGHT OF THE HIGHEST MOBILE OBJECT THAT WOULD NORMALLY TRAVERSE THE ROAD, WHICHEVER IS GREATER, FOR A PRIVATE ROAD.
 - D. TWENTY-THREE FEET FOR A RAILROAD, AND
 - E. FOR A WATERWAY OR ANY OTHER TRAVERSE WAY NOT PREVIOUSLY MENTIONED, AN AMOUNT EQUAL TO THE HEIGHT OF THE HIGHEST MOBILE OBJECT THAT WOULD NORMALLY TRAVERSE IT.
6. SPALDING COUNTY AND CITY OF GRIFFIN ARE IN THE PROCESS OF ADOPTING HEIGHT ZONING ORDINANCE.

REVISIONS

No.	Description	Date	By

Project Name:

**AIRPORT
LAYOUT
PLAN**

Drawing Name:

**AIRPORT
AIRSPACE
DRAWING (3 of 3)**

AIP Project Number:

Autocad Drawing Reference:

Date:

JULY 2017

Division:

PLANNING

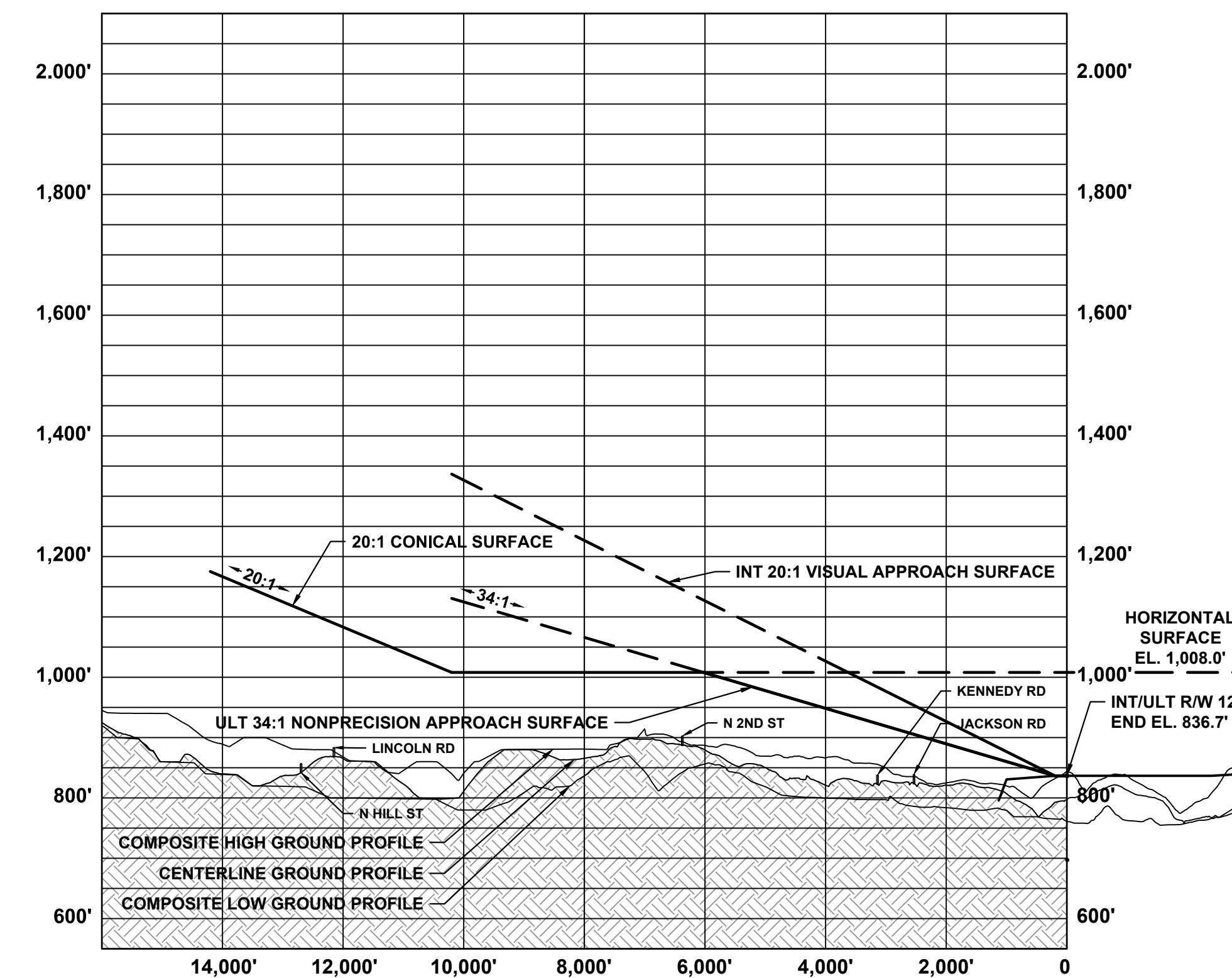
Scale:

HORIZONTAL: 1"=2,000'

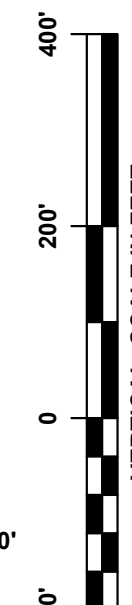
VERTICAL: 1"=200'

Drawing Number:

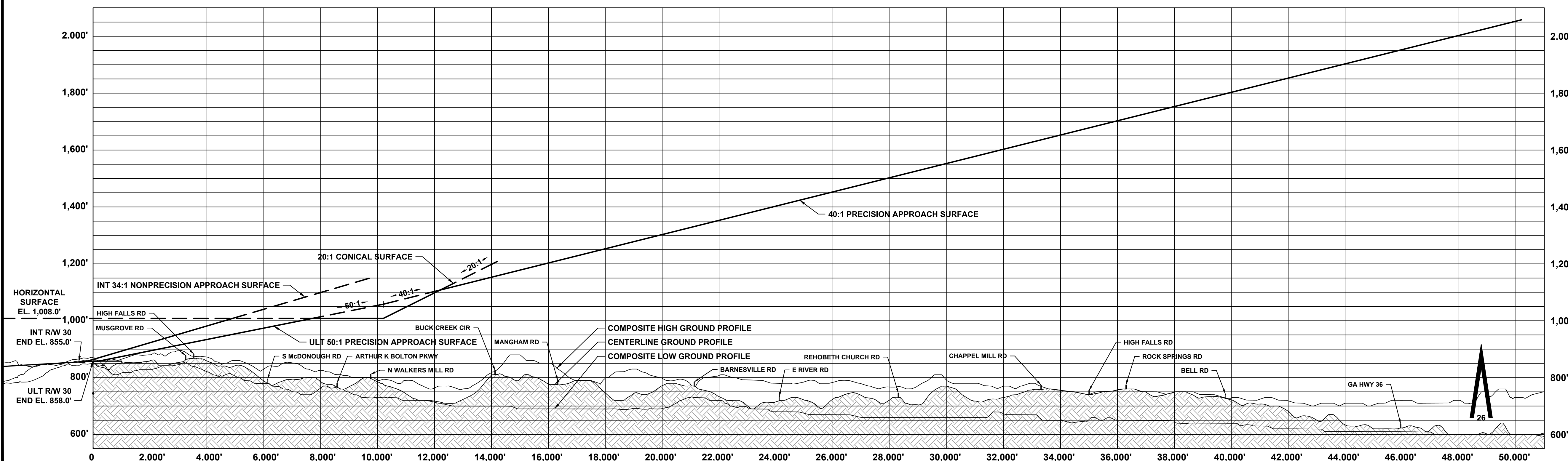
8



RUNWAY 12 PROFILE VIEW



RUNWAY 30 PROFILE VIEW



HORIZONTAL SURFACE EL. 1,008.0'
INT R/W 30 END EL. 855.0'
ULT R/W 30 END EL. 858.0'