



**Griffin-SPALDING  
COUNTY AIRPORT**  
GRIFFIN, GEORGIA

**Michael Baker  
INTERNATIONAL**

Designer:  
**JCD, TGM**

Technician:  
**TGM**

Checked by:  
**JCD**

Project Number:  
**143849**

- NOTES**
- COORDINATES SHOWN ARE IN NAD83.
  - ELEVATIONS SHOWN ARE IN NAVD88 AND ARE ABOVE MEAN SEA LEVEL (AMSL).
  - OBSTRUCTION DATA SOURCE: QUANTUM SPATIAL, FLOWN OCTOBER 22, 2014.
  - BASED ON GENERAL PART 77 SURVEY FOR PLANNING PURPOSES ONLY. SURVEY BASE IS NOT A DETAILED OBSTRUCTION ANALYSIS COVERING ALL INDIVIDUAL OBSTRUCTIONS.
  - THERE WILL BE NO OFZ PENETRATIONS.
  - REFER TO THE AIRPORT AIRSPACE DRAWING FOR FURTHER OUT OBSTRUCTIONS.
  - FAA CLEARANCE REQUIREMENTS NOTE: SECTION 77.23 OF FEDERAL AVIATION REGULATIONS (FAR) PART 77 SPECIFIES CLEARANCE REQUIREMENTS FOR ROADS, RAILROADS, AND WATERWAYS AS FOLLOWS:
    - SEVENTEEN FEET FOR AN INTERSTATE HIGHWAY THAT IS PART OF THE NATIONAL SYSTEM OF MILITARY AND INTERSTATE HIGHWAYS WHERE OVERCROSSINGS ARE DESIGNED FOR A MINIMUM OF 17 FEET VERTICAL DISTANCE.
    - FIFTEEN FEET FOR ANY OTHER PUBLIC ROADWAY.
    - TEN FEET OR THE HEIGHT OF THE HIGHEST MOBILE OBJECT THAT WOULD NORMALLY TRAVERSE THE ROAD, WHICHEVER IS GREATER, FOR A PRIVATE ROAD.
    - TWENTY-THREE FEET FOR A RAILROAD, AND
    - FOR A WATERWAY OR ANY OTHER TRAVERSE WAY NOT PREVIOUSLY MENTIONED, AN AMOUNT EQUAL TO THE HEIGHT OF THE HIGHEST MOBILE OBJECT THAT WOULD NORMALLY TRAVERSE IT.

**REVISIONS**

No.	Description	Date	By

Project Name:  
**AIRPORT LAYOUT PLAN**

Drawing Name:  
**INNER PORTION OF THE APPROACH SURFACE DRAWING - RUNWAY 12**

AIP Project Number:

Autocad Drawing Reference:

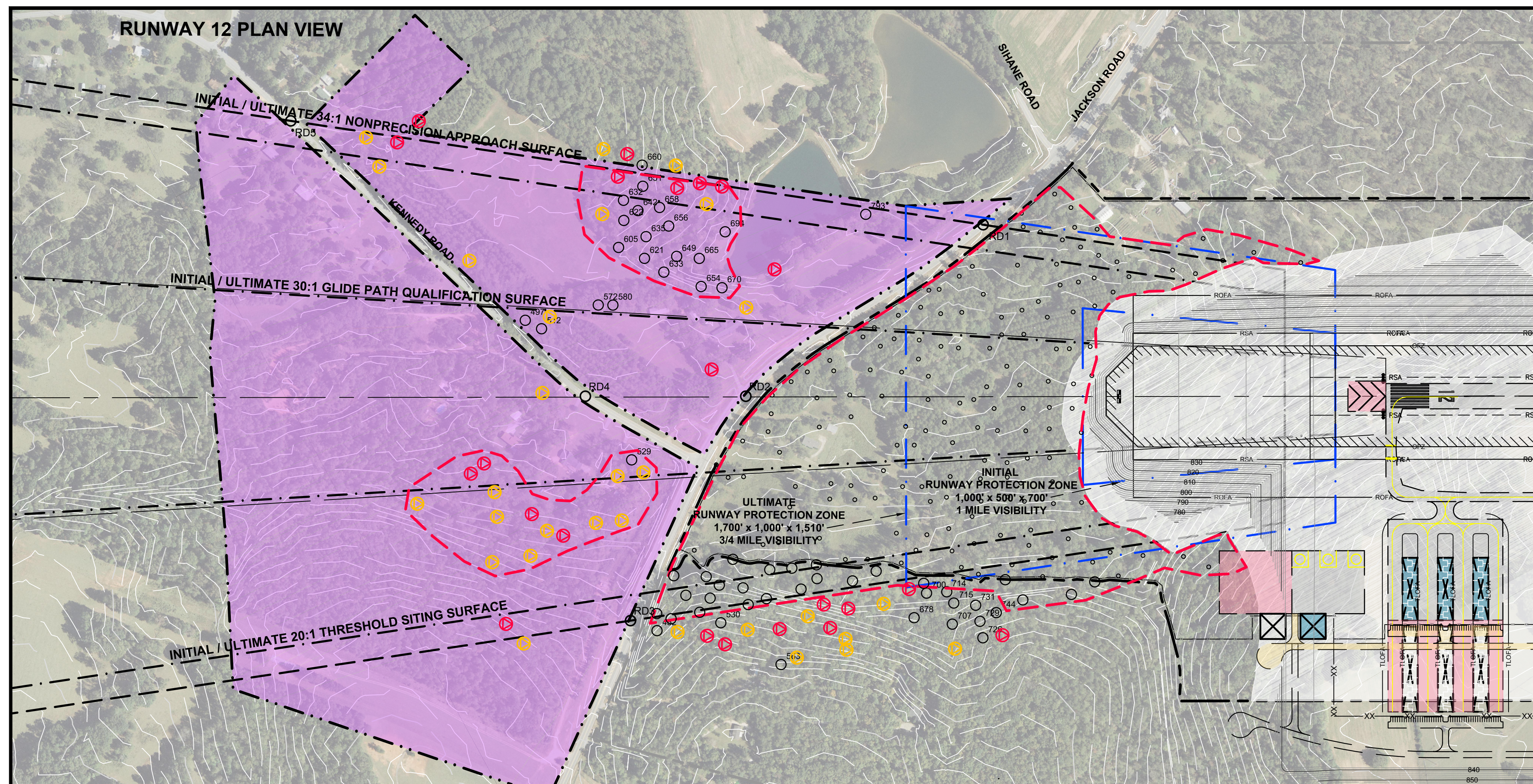
Date:  
**AUGUST 2017**

Division:  
**PLANNING**

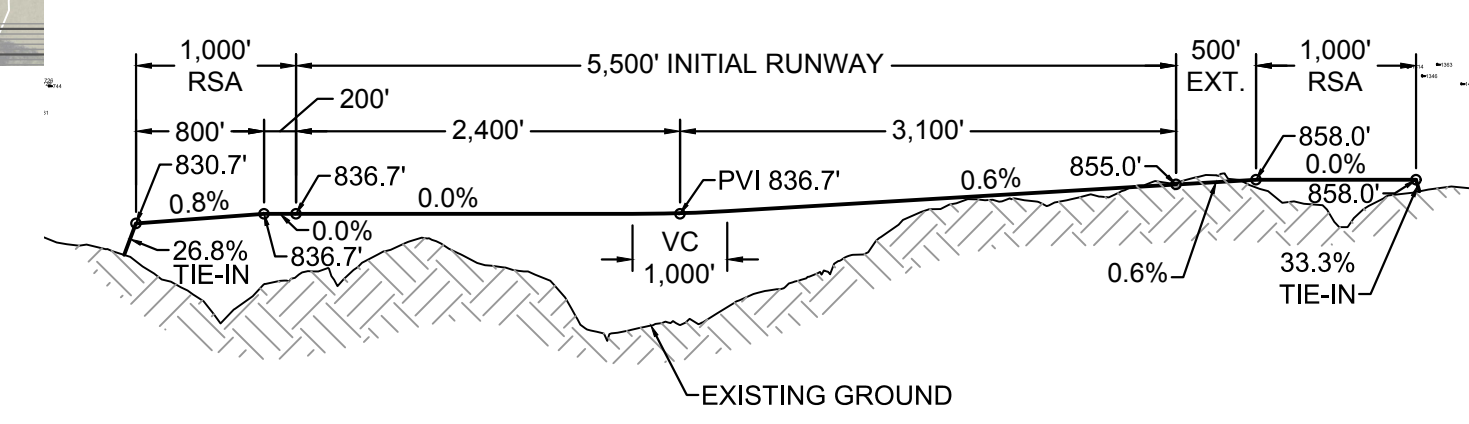
Scale:  
**HORIZONTAL: 1" = 300'**

Drawing Number:  
**9**

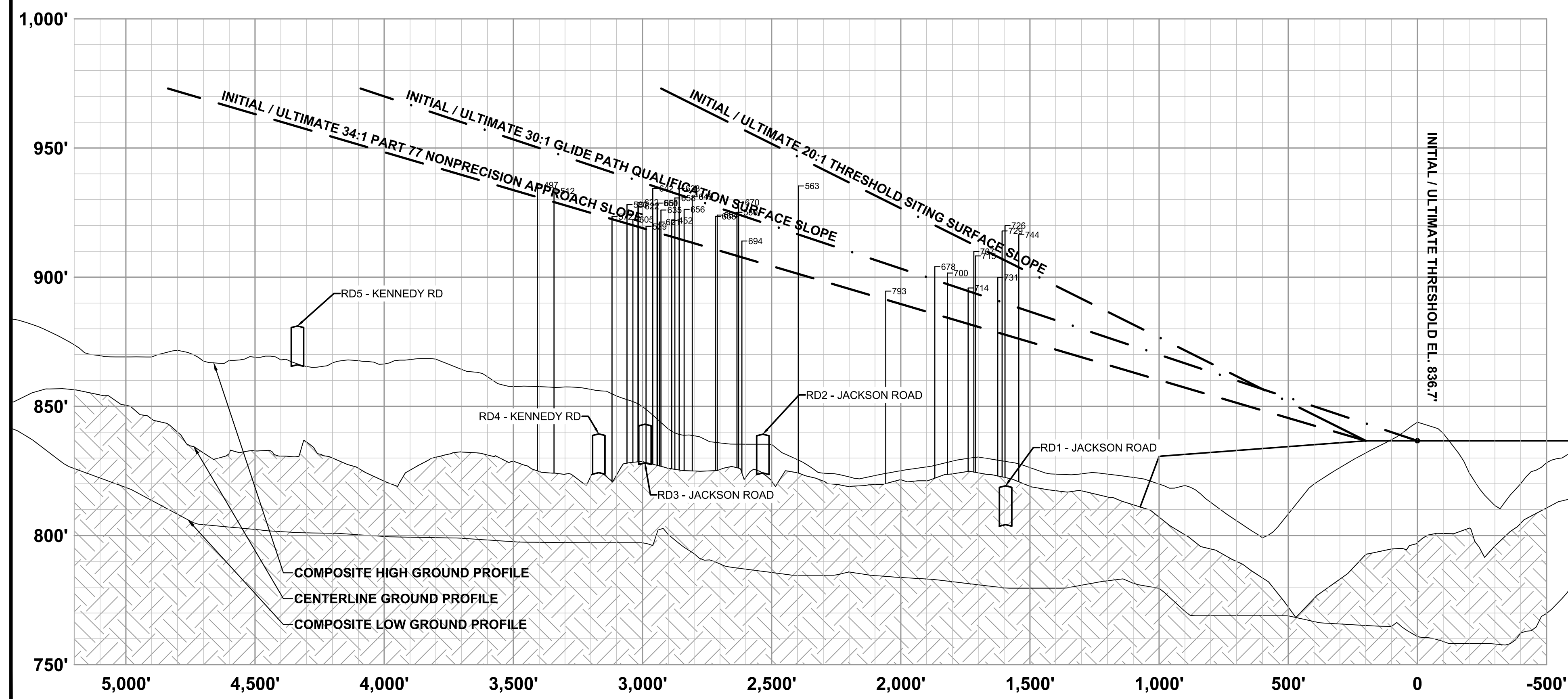
**NOTE:**  
REFER TO SHEET NUMBER 13 FOR RUNWAY 12 INNER PORTION OBSTRUCTION DATA



**RUNWAY CENTERLINE PROFILE**  
SCALE: 1" = 1,200'



**RUNWAY 12 PROFILE VIEW**



**LEGEND**

DESCRIPTION	INITIAL	ULTIMATE
PROPERTY LINE	---	---
EASEMENT	---	SAME
RUNWAY PROTECTION ZONE	---	---
RUNWAY SAFETY AREA	---	---
RUNWAY OBJECT FREE AREA	---	---
THRESHOLD SITING SURFACE PENETRATIONS	✕	SAME
FAR PART 77 SURFACE PENETRATIONS	○	SAME
ON-AIRPORT TREE CLEARING	○	SAME
TREES 0'-5' BELOW FAR PART 77 SURFACE	⊙	SAME
TREES 5'-10' BELOW FAR PART 77 SURFACE	⊙	SAME
PROPOSED TREE CLEARING LIMITS	---	SAME

MAGNETIC DECLINATION  
4° 56' W  
JANUARY 2015

ANNUAL RATE OF CHANGE  
0° 5' W

SOURCE: NATIONAL GEOPHYSICAL  
DATA CENTER

